



# ER/Studio® Portal

Advanced metadata search and reporting

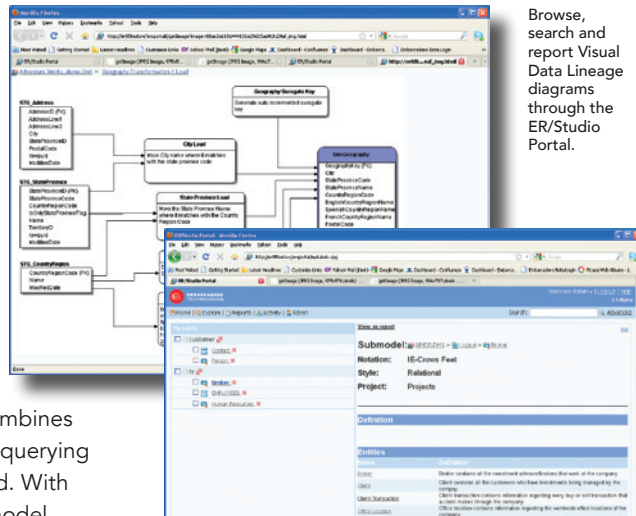


Embarcadero® ER/Studio® Portal is a web-based search and reporting tool to access and query the ER/Studio Repository for improved understanding of metadata, object whereabouts, and data usage. The Portal can be accessed via any web browser for cross-model and repository-wide data definitions and objects searches.

- Real-time metadata information and access
- Advanced ad-hoc query and reporting
- Powerful administrative and security console

## REAL-TIME METADATA INFORMATION AND ACCESS

ER/Studio Portal is a powerful online metadata query and reporting tool that combines portal and search technologies. It delivers querying and data reporting specific to a user's need. With a few clicks, users can easily access data model definitions and objects stored in the repository. The Portal delivers data modelers, data architects, developers, business analysts, and data stewards with up-to-date information. By providing real-time access and configurable reports of all the data models and repository metadata, the Portal facilitates improved metadata consistency and better collaboration.



Browse, search and report Visual Data Lineage diagrams through the ER/Studio Portal.

Add object labels and comments to organize and customize detailed reports.

## ADVANCED AD-HOC QUERY AND REPORTING

ER/Studio Portal provides an easy-to-use interface with structured hierarchical information browsing and navigation through detailed drill-downs. With both simple and advanced search features, users can customize their search term by "starts with", "contains", "ends with", "is an exact match of", or even limit the search to specific object types or specific ER/Studio diagrams. With more than 20 out-of-the-box reports, users can quickly execute a report on an entity, submodel, or model and drill down to the detailed report for each object type. These reports are then easily exportable to HTML, PDF, or XLS to share with other users.

## POWERFUL ADMINISTRATIVE AND SECURITY CONSOLE

ER/Studio Portal is an intelligent platform that allows administrators to control and customize the application interface, administer user permissions, and manage schedules and repository data synchronization all from one page. Administrators can customize the menus and reports for specific users or groups as well as specify their own logo to provide their own corporate look and feel. Administrator access to the Portal's security center makes it easy to manage security and access to the content. Users are authenticated against the access control list in ER/Studio Repository prior to running queries, allowing the data architect to control which content is published to the Portal. Through the console, administrators can maintain access controls, manage schedules, manage subscriptions, and refresh the settings

## Design & Modeling Products

### ER/Studio XE2

Complete modeling and architecture solution combining data, process and UML modeling into a powerful multi-level design environment. All XE2 products include AppWave™, so you can experience your apps friction-free, like a mobile app. You can run instantly, track app usage, get automatic updates and more.

### ER/Studio® Data Architect

Data modeling tool for analyzing, designing, creating, and maintaining database applications

### ER/Studio® Portal

Centralize self-service web portal for searching and reporting metadata contained in the ER/Studio Repository

### ER/Studio® Repository

Server-side model management system for collaborative team modeling

### ER/Studio®

#### Business Architect

Business modeling tool for connecting process and data

### ER/Studio®

#### Software Architect

Object-oriented modeling tool to visually analyze, design and implement complex application and data structures

### ER/Studio® MetaWizard

Integrate metadata across modeling tools, business intelligence, ETL platforms and industry-standard exchange formats (XMI, XML and XSD)

### ER/Studio® Viewer

View, navigate and print ER/Studio models in a view-only environment

### ER/Studio®

#### Universal Data Models

Industry data model templates for ER/Studio that reduce development time and facilitate standardization

## Select Features

### User Searching & Browsing

Structured Browsing & Navigation	Provides a web-based navigation of the repository diagrams. The user will be presented with a scrollable list of projects and the diagrams contained within each repository project folder.
Simple Searching	Searches text properties of all object types and diagrams for a partial match on the search string supplied by a user.
Advanced Searching	Wildcard searching with the ability to limit the search to specific object types or specific projects and specify a sort order.
Business Reports	Pre-installed reports geared toward business analysts looking for information such as business names, definitions, and object whereabouts.
Technical Reports	Pre-installed for implementation details such as data types, column width, column names, how objects are related, data lineage between models, and security classification information.
Saved Reports	Displays all reports or searches the user chooses to execute in the background; are saved and can be viewed without re-execution.
Drill Down Details	Ability to drill down to the Detail Report for each object type, to the Diagram Detail Report, or to display results in another format.

### Security

Secure Login	Authenticates users prior to running queries and reports. Users are required to type in a user name and password that is stored in the ER/Studio Repository.
Role Based Permissions	Permissions are granted based on a user or role accessing an action sequence. Identities are authenticated against a user name and password in the ER/Studio Repository.

### Administrator Services

Administrator Page	Administration page to maintain access controls, manage schedules, manage subscriptions, and refresh the BI Server settings.
Automatic Data Synchronization	As diagram objects are added, deleted, or updated in the ER/Studio Repository, the most recent version of the diagram will be sent to the reporting portal. Synchronization can be scheduled at the administrator's discretion.
Diagram Filtering	Ability to filter, by diagram, the content that flows from the ER/Studio Repository to the reporting database.
Portal UI Style Customization	Allows customization of the portal style, layout, and content schemes. Easily change banner, menu bar, and content style, including colors, images, titles, and fonts.
Custom Reporting	Enables administrators to generate a model, dictionary, or data lineage business report and choose the content items, format, sort, aggregation, and filter criteria. The generated reports can be saved, shared, and rerun at a later date by the author and other users.
Out-of-the-Box Template Reports	Administrators can access out-of-the-box and ER/Studio-themed templates to create custom business, technical and impact analysis reports.

## DBMS Support

- IBM® DB2® UDB 8.x , and 9.x Server
- Microsoft SQL Server 2005, 2008
- Oracle® 9i ,10g, 11g

## System Requirements

- ER/Studio Repository
- Minimum Pentium IV-class processor or higher
- Minimum 300MB hard disk storage for installation required
- Suggested 3 GB RAM
- OS: Windows 2003 (32-bit mode) Server, Windows Server 2008 R2 64-bit
- Mozilla Firefox 2.0 (or later), Microsoft Internet Explorer 6.0 (or later), Netscape 7.2 (or later), and Safari 1.0.

Download a Free Trial at [www.embarcadero.com](http://www.embarcadero.com)

Corporate Headquarters | Embarcadero Technologies | 100 California Street, 12th Floor | San Francisco, CA 94111 | [www.embarcadero.com](http://www.embarcadero.com) | [sales@embarcadero.com](mailto:sales@embarcadero.com)