

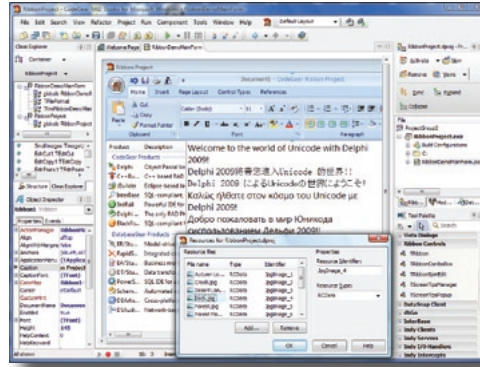


Delphi® is the RAD Visual development environment for software and database application developers who need to rapidly deliver high performance and easy-to-maintain software applications. Use the powerful Delphi Integrated Development Environment (IDE) with its visual design surface, extensive component universe, powerful heterogeneous database framework, and worldwide community of over 3 million developers to quickly and visually design and deliver applications. The robust Delphi language and compiler give you access to the power and speed of native Windows development.

- Increase productivity with time-saving IDE and tools
- Speed development with drag-and-drop functionality and component library
- Easily connect with all your data across multiple sources

INCREASE PRODUCTIVITY WITH TIME-SAVING IDE AND TOOLS

Delphi's IDE has features that help speed coding so developers can focus on framework design, code logic, and algorithms while rapidly finding the information they need and avoiding coding errors. Features such as Code Completion, Error Insight, Help Insight, Class Completion, Block Completion, and Live Templates enable developers to write code at the speed of thought. The Resource Manager handles the addition of Windows resources to an application, while a full-featured debugger makes examining the internals and execution of code completely transparent. Component-based development and design with new Office-style ribbon controls and Windows XP and Vista theming let you create rich user interfaces with just a few clicks of the mouse.



Delphi's high productivity development environment includes integrated editor, visual designer, debugger, and database tools.

SPEED DEVELOPMENT WITH DRAG-AND-DROP FUNCTIONALITY AND COMPONENT LIBRARY

Time-tested, completely extensible, rich, and full-featured, the Delphi Visual Component Library (VCL) provides developers with an easy-to-use set of components for building powerful user interfaces and database access. Since the library is easily expandable, developers can write their own components or use third-party components from open source, freeware, or commercial sources. Components can be effortlessly and quickly added to the development environment for reuse and easy visual manipulation. Delphi also provides a comprehensive set of editing, refactoring, and debugging tools for fast and easy development.

EASILY CONNECT WITH ALL YOUR DATA ACROSS MULTIPLE SOURCES

Delphi provides native, high performance access to all the popular database management systems. Using a robust database access framework, you can easily retrieve and display data without writing any code. Data can be created, read, updated, and deleted with ease, either from visual controls or in code. DataSnap provides a simple and powerful framework for building n-tier applications with full-featured and completely customizable middle-tier application servers. Developers can write stored procedure code in Delphi by embedding business logic and other data management code in application servers.

PRODUCT EDITIONS

Professional

- Local database connectivity to InterBase, Blackfish SQL, and MySQL
- Blackfish SQL deployment on systems with one user, 512MB database size
- VCL for the Web with limit of five connections

Enterprise

Includes Professional Edition plus:

- Database server connectivity to InterBase, Blackfish SQL, MySQL, Microsoft SQL Server, Oracle, DB2, Informix, and Sybase
- DataSnap multi-tier database application development
- Blackfish SQL deployment on systems with 5 users, 2GB database size
- VCL for the Web with no connection limit
- Additional UML modeling capabilities

Architect

Includes Enterprise Edition plus:

- Reverse-engineer, analyze, and optimize databases
- Ability to create logical and physical models based on information extracted from databases and script files
- Easily readable and navigable diagrams
- Supports forward engineering with automatically generating database code from models
- Advanced compare and merge with bidirectional comparisons and merges of model and database structures

Related Products

CodeGear™ RAD Studio
Combines Delphi 2009, C++Builder 2009, and Delphi Prism 2009 to provide a complete solution for native Windows and .NET application development.

C++Builder®

Combines the power of the C and C++ languages and libraries with the productivity of visual rapid application development.

InterBase® SMP

Highly scalable, powerful, embeddable database.

Blackfish™ SQL

Fully managed, SQL-compliant, highly portable, embedded database.

ER/Studio®

Data modeling tool for designing and understanding your databases.

Embarcadero® All-Access™

Instant access to the languages, tools, and technologies to design, build, and run your software applications and database systems.

Features	Description
Delphi	
High Productivity Integrated Development Environment (IDE)	
Unicode-Enabled Code Editor	Includes color syntax highlighting and Code Insight, debugger with breakpoints and watch window, project manager, visual designer, object inspector, structure view, and tool palette
Additional IDE and Editor Features	Includes live code templates and class completion, advanced debugging, refactorings, UML modeling, data explorer, class explorer, SQL query builder, localization tools, and unit testing
Language and Compiler	
High-Performance 32-bit Optimizing Delphi Native Code Compiler	With new Delphi language support for Unicode, generics, and anonymous methods
Microsoft Win 32 SDK	Includes support for Windows Vista including themed applications, glassing, file dialogs, and Task Dialog components
VCL - Visual Component Library	
VCL Library	Enables rapid drag-and-drop visual development with hundreds of components including new ribbon controls. VCL source code is included.
Database Application Development, Access, and Design	
Database Connectivity and Database Drivers	Remote and local connectivity to Oracle, DB2, Microsoft SQL Server, Informix, Sybase, InterBase, MySQL, and SQL Anywhere in the Enterprise and Architect editions. Local connectivity to InterBase, MySQL, and SQL Anywhere in the Professional edition.
Blackfish SQL database	Fully managed, SQL-compliant, highly portable, embedded database. Unlimited 1-user local deployment with Professional edition. Unlimited 5-user deployment with Enterprise or Architect.
InterBase Developer Edition	Highly scalable, powerful, embeddable database with development license
DataSnap	Multi-tier database application framework (Not available in the Professional Edition)
Web Application Development and Remoting	
VCL for the Web	Lets you build native web and intranet applications (Five connection limit in Professional Edition)
COM Support With Wizards	Enables creation of COM+ objects and servers and type library editor
Complete Development Solution	
UML Modeling	Includes class diagrams and synchronization between the model and source code
Advanced Modeling Diagrams and Charts	Includes sequence diagrams, collaboration diagrams, state charts, deployment diagrams, use case diagrams, activity diagrams, and component diagrams (Not available in Professional Edition.)
Bundled Tools	Includes Rave Reports, glyFX icon library, InstallAware Express installer, and software from CodeGear partners

System Requirements
<ul style="list-style-type: none"> • 1GB RAM (2GB+ recommended) • 3 GB free hard disk space for Delphi • 750 MB free hard disk space for prerequisites • DVD-ROM drive • 1024x768 or higher-resolution monitor • Mouse or other pointing device
<ul style="list-style-type: none"> • Processor • Intel® Pentium® or compatible, 1.4 GHz minimum (2GHz+ recommended)
<ul style="list-style-type: none"> • Windows • Microsoft® Windows Vista SP1 (Requires Administrator rights) • Microsoft Windows XP Home or Professional (SP2 or SP3) • Microsoft Windows Server 2003 (SP1) or 2008 • Microsoft Windows 2000 Professional or Server (SP4)

Download a Free Trial at www.embarcadero.com

Corporate Headquarters | Embarcadero Technologies | 100 California Street, 12th Floor | San Francisco, CA 94111 | www.embarcadero.com | sales@embarcadero.com